



FROM:



THINK BEFORE YOU INK.

ACTIVITY 3B

Finding and Rating Local Building/House Types

During this activity you will see what types of buildings/houses occur in your local area, and crucially, which ones are popular and people would like to see more of.

What do I need to know?

In many areas of the country, houses built between 1700 and 1900 are the most popular, desirable and simple for housebuilders to copy or draw inspiration from. Earlier local vernacular buildings tend to be very specific to an area and are often difficult to emulate authentically. Buildings built after the 1940s tend to be less specific to place.

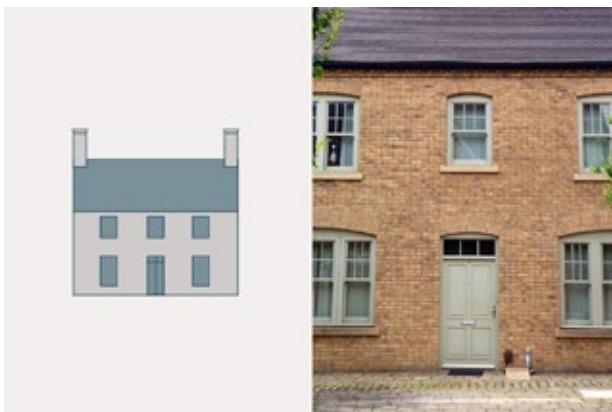
This is an over simplification of course, so it is up to you as a community to identify the most popular and best examples of local buildings in your area and which you feel will be the most replicable for developers and builders. It is very important that the most popular and well-liked homes in your area are chosen for the templates by consensus rather than driven by an individual expert's view of what they might like. It is also really important that members of the group with a building background help you discuss which are those homes that will be relatively straightforward to build as new. This is a balancing act between desirability and practicality – set the bar high but not out of sight!

Activity 3a Instructions

1. Think of those who are familiar with the design and construction of the best houses in the area. These might be local builders, conservation architects, local historians, photographers or artists. Involving them in this activity will help ensure there is a good range and quality of images at the workshop.
2. Before the workshop takes place, download and distribute The Building Types Template from the Workshop 3 webpage. You need to use this to find examples of house types in your area, so people are clear which types of building to photograph.



REQUIRES
PREPARATION



AN EXAMPLE OF THE BUILDING TYPES TEMPLATE

3. Instruct your workshop-goers to take photographs of the buildings/houses they like the best in their area for each housing type illustrated in the Building Types templates.
4. Whilst it isn't necessary to add each housing type to your Manual, ideally you would take 2-3 images of each type from smaller to larger houses.



GROUP MEMBERS ON A TOUR OF THEIR COMMUNITY.

You would also have some good apartments and mixed-use buildings if appropriate. Don't worry, not every area will have examples of every type so if you wish to add them, you may need to go further afield to find good examples!

5. At the workshop, choose the photographs that your group would like to insert into the BIMBY manual. These will be your examples of what you would like new development/housing to look like, so it's quite important. Remember, you can always retake photographs after the workshop when you are decided on what you favour.

The images should cover:

- narrow fronted
- wide fronted
- paired
- mews
- apartments