

FROM:



THINK BEFORE YOU INK.

## ACTIVITY 1A

# Identifying Community Skillsets

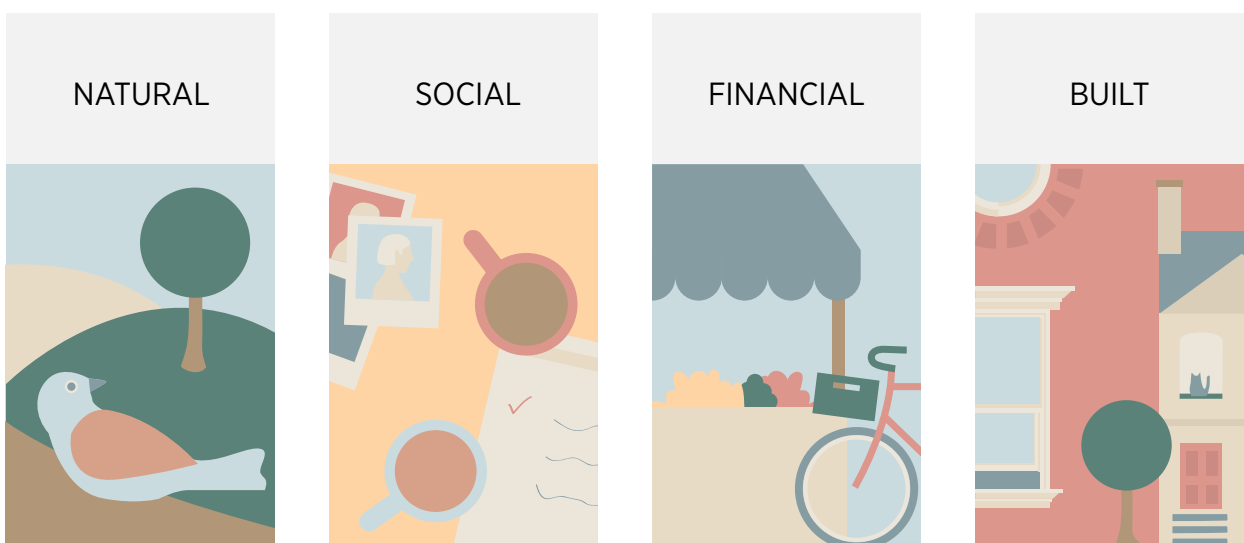
This first activity will help you form a well-balanced core group of people, the BIMBY Leadership Group (8-20 people), who will drive forward the process, and lead on content creation. You will also start a list of attendees for all workshops (50-100 people).

### What do I need to know?

Before the workshop, your BIMBY Coordinators should have held a preparation meeting and developed a draft BIMBY Leadership Team. During Activity 1a, you and your workshop attendees will decide on your final Leadership Team, assorting them according to the Four Pillars of Sustainability.

Every place is endowed with different natural, financial, social and built assets.

We call these the Four Pillars of Sustainability:



## Activity 1a Instructions

1. Write out four columns under the titles of Natural, Social, Financial and Built. These headings are the 'Four Pillars' of sustainability and also structure exercise 1b. Then think about people and/or organisations in your community that have skills in those areas (say 2-5 people under each Pillar).
2. For example:

### NATURAL

Conservation groups, gardeners/landscapers, wildlife experts, farmers

### SOCIAL

Police, teachers, doctors, historians

### FINANCIAL

Chamber of commerce, accountants, bankers, local businesses/EMPLOYERS

### BUILT

Civic society, architects, engineers, builders

Try to select those that you think will want to get involved in the BIM-BY process or wouldn't mind being called on for expert advice.



3. Make a note of their name, organisation and contact details in a spreadsheet or list.
4. In the workshop pin up this list with plenty of blank rows for everyone to add suggestions and ask people if they would join the BIMBY Leadership Group. Keep all other names, details of attendees from the list and sign in sheets for inclusion in further workshops and as an appendix.